

Australian



CORRIEDALE

Association Newsletter



JANUARY 2013



**JANUARY
2013**

PO Box 632, Balwyn, Vic, 3103.
Phone: (03) 9817 6714

Web: www.corriedale.org.au
Email: secretary@corriedale.org.au

FROM THE PRESIDENT

It is time to reflect on the previous year which had many challenges for farmers and to look forward to a better year in 2013!

In our area we had a particularly tough winter with a lack of feed for the stock and all the hay reserves had run out, so a massive amount of what appears to be good quality hay has been made this season, with a lot of hay to be carted and already one haystack fire next door to me.

Unfortunately sheep and lamb prices have come back in value somewhat, but we live in hope for a rise this year, and ram sales across all breeds have been a bit softer this season.

In our area 055, Telstra had a fire in the exchange with the net result being all telephones, landline and mobile, internet, EFTPOS, fax, banking, etc. grinding to a halt for varying amounts of time, in my case 15 days and then intermittently. It was quite pleasant for a while, but it did get a bit hard towards the end to get anything done externally as we have come to rely on technology so much. However the sheep kept on eating and growing wool and life still worked so while we think technology is essential, sometimes it is just a luxury.

I would like to thank Brenton Lush and Ian MacKinnon for all their help during the year and Peter Weston for all his work keeping the ship afloat and heading forward and wish him the best of luck on the sale of his house in February-March and relocation a few months later.

I hope you all had a happy and enjoyable Christmas and I wish everyone a safe and prosperous New Year.



Nick Cole
President

Field Day at Gundowringa

(From Richard and Jane Carter)

It was wonderful to see 50 Corriedale breeders stretching from 14 years to 80 sharing the passion and all learning something more about the breed in the wonderful setting of the Gundowringa shearing shed at Crookwell, NSW on October 17.

One week earlier there would have been snow and just the day before there had been a howling westerly but it turned out to be a superb spring day, the Gundowringa sheep looked a picture and Charlie supplied 150 ewe hoggets and 20 rams for everyone to go to work on. The NSW State Events Organiser had hoped for an interactive day from all those present and it certainly proved to be one, ending with the students searching through several hoggets for a sheep that Charlie and Jeff had



Successful field day at Gundowringa.

previously picked out. They found that sheep and many of the other top sheep in very quick time, in a hands-on, realistic, classing exercise.

The NSW Corriedale members were invited to Gundowringa (Flock 18) by the Prell family to conduct this hands-on workshop featuring wool classing, handling, parading, measuring and also including a veterinary segment conducted by Bill Johnson, OLPHA district vet. Tony Manchester, NSW state president, from the Roseville stud (Flock 2361) came down to give a lecture on measurement and muscle and general sheep classing and to keep an eye on the new State Events Organiser, Henry Thompson (Flock 2413).

The St. Gregory's College, Badgally stud (Flock 2353) sent 24 students and three teachers, and Lithgow High School (Flock 2399), sent 14 students and two teachers to take part in the day.

Henry Thompson, as usual, cooked a superb barbeque luncheon ably assisted by Jane Carter (Flock 239). He also lectured on the subject of sheep parading. Charlie and Jeff Prell and Richard Carter gave the other lectures.

Before lunch, Bill Johnson, one of the finest vets in the district gave a lecture on hands-on experience of inoculating and drenching and then did a post-mortem on a deceased sheep (not a Corriedale). Then everyone moved on up to the quarters for lunch.

During lunch, a little group of ewes and lambs, old girls from Gundowringa and now part of Flock 239, who Jane and Richard Carter had brought along to discuss the merits of calm sheep handling had drifted out through an open gate past their Gundowringa colleagues for a quick bite. The sight of everyone walking back down to the old shed accompanied by this little flock walking calmly back into the yards to continue the day, perhaps said it all.

"Awesome day," one student was overheard saying.

The day ended with all the students heading for their long trip home, looking forward to meeting competitively on the show circuit next year. The NSW Committee would like to thank the schools' staff for their enthusiasm and mighty effort.

Don Dennis - Obituary

Don Dennis, who died on 28th August 2012, was the fourth of seven sons of Harry Dennis who founded the historic Fairfield (actually registered as Dfield) Corriedale stud in 1925. Don inherited in full measure his father's enthusiasm for, and skill in, breeding Corriedale sheep. Equally importantly he also inherited both Harry's delightful dry sense of humour and his exemplary code of ethics. These attributes combined to make Don highly respected and delightful company. Corriedale breeders showed their appreciation by making him a Life Member of the Association.

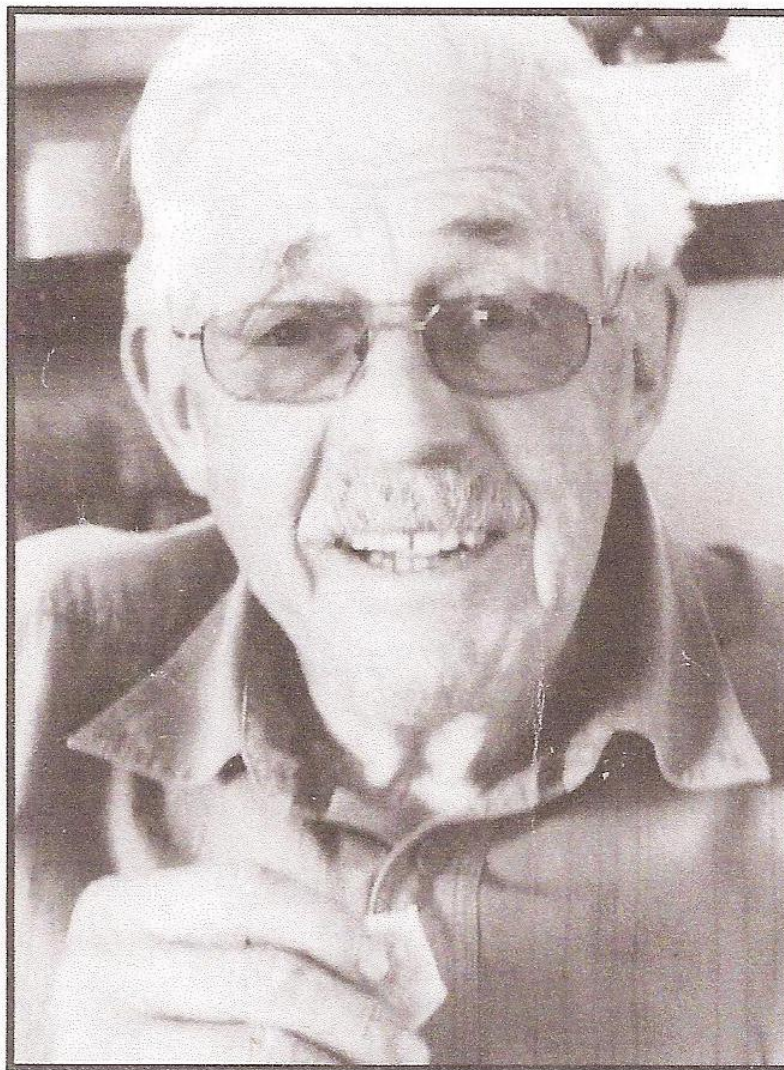
Don and his wife Telfer (who is an extremely talented artist) have three children – Nick, who now manages the property, Claire, who with her husband Peter, conducts the Blackwood Corriedale stud which is achieving considerable success in the showring and Chris who, after earning a high reputation amongst New South Wales sheep and wool growers, graduated as a Bachelor of Business Studies at Charles Sturt University in 2008.

Neither Don nor his father exhibited their sheep in shows to any great extent, being convinced that their excellent on-property performance was a sufficient indication of their quality. Nevertheless, the stud's winning of the ram championship at Campbell Town Show in 1968 was achieved in very dramatic circumstances. The ram escaped from the utility in Epping Forest on the way to the Show. Don

managed to recapture it with considerable difficulty and expertise. The ram's subsequent triumph was an extremely happy conclusion to a highly dramatic occasion.

Don represented Tasmania on Federal Council over many years. He and Telfer also derived much interest and entertainment from attending the World Corriedale Conference in South America. Events such as these provided material for the fund of amusing stories that helped to make Don such excellent company.

(From Andrew Nicolson)



The late Don Dennis.

Corriedale Stays Strong

(From Matthew Raggatt, Stock & Land)

Corriedale wool has been lauded for its consistency as three Tasmanian clips went under the hammer during a feature sale at the Melbourne wool stores on July 5.

Prices were firm for the wool from two of the oldest Corriedale studs in Tasmania – Streanshalh and Quamby Plains – as well as from Terry and Jane Lane's Westfield property.

Andrew Nicolson's Streanshalh stud, founded in 1908 at Campbell Town in Tasmania's northern Midlands, sold its offering at an average price of 482 cents a kilogram greasy – placing it in the highest range of prices for the 29-micron clips.

Three of Streanshalh's four lots were in the 29M range, with one 27.2M, while the average length was 110 millimetres.

Richard Archer sold four bales from his Quamby Plains stud at Hagley, founded in 1917, reaching 775c/kg greasy or more than \$1400/bale.

The 25.7M fleece provided a 30c/kg rise on equivalent prices from a fortnight earlier.

Mixed farmers Terry and Jane Lane, of Westfield, Hamilton in the Derwent Valley, offered 27 bales and received a top-line sale of 476c/kg greasy, with an average of 44c/kg for their 28-30M wool.

The Lanes, who also run a dairy farm, usually buy about 250 Corriedale ewes each year, predominantly from the Karanda property at nearby Tunbridge.

Elders Victoria/Tasmania wool sales manager Lachie Brown said while Merino wool prices had been reduced by 10 to 15 percent over the past two to three months, Corriedale prices had held up well.

Mills will use Corriedale or broader type wool because of its relative value to Merino [wool],” he said.

“The trade likes it because of its tight micron range.”

Elders Vic/Tas Premier wool manager Elliot Lindley said the wool was used in knitwear, socks and fine furnishings throughout the world.

The majority of Corriedale wool goes to China, with some to South-East Asia and Europe.

New Address for ACA Head Office

(From the Secretary)

After nearly 27 years Karen and I will be placing our house at 2 Peverill St, Deepdene, Vic on the market next February-March.

We intend to downsize and buy in nearby Balwyn/North Balwyn and continue to run the Corriedale Secretariat.

I have been Secretary since August 1, 1993 and the Corriedale Head Office has been run from home for over 16 years after three years in East Kew.

Members are requested to note the following contact details from mid-January 2013:

Postal address: PO Box 632, Balwyn, Vic, 3103

Phone: (03) 9817 6714

Fax: To be advised

Email:
secretary@corriedale.org.au

A major de-clutter of Corriedale records is underway so if you wish to obtain Flock Registers from 1993-2012 or old newsletters/journals, please contact me urgently.

Invitation to Armidale

Every year the LAMBPLAN USERS GROUP meets to discuss many issues that affect us. We find this stimulating and informative as well as a social get-together. This year we are meeting in Armidale to get direct contact with the leaders of sheep breeding in LAMBPLAN and the Sheep CRC. As we are meeting at the headquarters of sheep breeding we thought it a good opportunity to invite anybody interested to join us.

Subjects on the agenda at this stage include genomics, eating quality, and mature weight. If you would like to join us and have a subject you would like discussed please let me know and we will try and include it on the agenda.

We have put aside rooms at the Moore Park Best Western Motel (phone: 02 6772 2358, fax: 02 6772 5252, email: mpi@mooreparkinn.com.au). You need to book your own rooms and mention Performance Corriedales to get the corporate rate of \$112 for a single or \$124 for a double room. The date for the annual gathering is Thursday Feb 28 and Friday March 1st which is booked with LAMBPLAN.

Chairman
Wal Jenkin
Phone: 08 8738 9363

Secretary
Midge Gough
Phone: 03 5578 6267

A Royal Experience

It is not every day that one is invited to a function to meet royalty, so when an invitation was received to meet HRH the Prince of Wales (that is, Prince Charles), I thought I had best take up the opportunity. As part of his Australian Tour, Prince Charles had agreed to attend two wool industry functions in his capacity as patron of the Campaign for Wool. These events were at Leenavale Poll Merino Stud, Sorell, Tasmania, and in Sydney and had been coordinated by Australian Wool Innovation.

The Campaign for Wool was initiated in England as a response to the low wool prices received by English farmers. Most of the wool produced in England is rather broad in micron, so it has special relevance to the interior textile and carpet wool markets. The prince owns over 50,000 ha of land in Britain and grows these sheep among other things.

As patron of the Campaign, he is actively supporting the use of all types of wool as a sustainable and renewable fibre with many different purposes.

I was invited to attend the Tasmanian event, where the prince inspected some sheep, threw a fleece and met with a group of about 100 wool growers and industry workers. While my own contact with His Royal Highness was limited to a handshake and some brief words, the visit did give me an opportunity to learn about the role The Prince of Wales plays as an advocate for agriculture, especially in Britain. Unfortunately, I was not able to explain the benefits of using Corriedales in England to help reduce their micron, but hopefully the Campaign for Wool will keep promoting the use of broader micron wools through Europe and China in particular.

(From Brenton Lush)

Letter to the Editor

18th December 2012

Dear Sir,

We would like to extend our thanks to the Australian Corriedale Association for allowing us the opportunity to be involved in the exchange youth program between Australia and New Zealand in November. Many thanks to Charlie Prell, Tony Manchester, Peter Weston, Nick Cole and Richard Carter for helping us prepare for our trip away.

Our time in New Zealand was amazing, interesting and informative. We were well looked after by the New Zealanders' hospitality and met many people who were willing to share their stories. We have learnt many new things about the Corriedale breed and New Zealand and really enjoyed our stay with each of the families who hosted us.

A more detailed report about our experiences will be sent in the weeks ahead, but we would like to say thank you again, for the wonderful chance the Association has given us to learn about Corriedales. The trip has sparked me into just buying some more sheep "to play with" and learn from.

Wishing you all a safe and prosperous New Year.

**Matthew Thompson &
Clare Price**

Young Ambassador Award

The final of the Young Ambassador Award was conducted at the 2012 Australian Sheep and Wool Show, Bendigo, Vic in July with the winner being Clare Price, Mooralea, Broadwater, Vic.

Runner-up was Matthew Thompson, Tymec, Daisybank, Laggan, NSW.

The Australian Corriedale Association organised this award with both Clare and Matthew each winning an air ticket to New Zealand.

They flew into Christchurch on November 12 where they were met by Tom Burrows who co-ordinated the hosting families.

There will be a full report in the next Newsletter from Clare and Matthew.

Special thanks to Charlie Prell, Tony Manchester and Bruce Hamblin for their active assistance.

\$2500 at Multi-Vendor Sale

The cream of Western Victoria's Corriedale rams were on offer at a blue ribbon multi-vendor sale at Derrinallum on November 1, where Tasmanian buying support bought in volume, including the top priced ram.

Di and Ian MacKinnon, Glen Esk, Conara, Tasmania, flew to Victoria the morning of the sale looking to buy stud rams to be used over their 500-head flock.

After much bidding during the helmsman auction, they were able to secure the top priced ram at \$2500 offered by Milton Savage, Gambier View/Compton House, Bradvale, near Skipton, and a second at \$750 that will bring both outcross genetics and excellent wool to the Glen Esk flock.

Also travelling from Tasmania were JC & WA Gee, Cluan homestead, Westbury, Tas, who purchased seven rams to \$950, av. \$770.

Looking for rams with larger frames and quality wools, the Gees will use the rams over their self-replacing commercial Corriedale flock.

Chris Box, Carboor via Milawa, also purchased in volume, buying 10 rams, av. \$511. He was after rams with black feet and black muzzles to handle the higher rainfall country of North East Victoria and also more traditional Corriedale wool types on good frames.

J Molesworth, Ballark, Morrisons, purchased two rams at \$1850 and \$500; while Tenterden Pastoral, Trawalla, purchased two rams av. \$1000.

Five vendors offered rams at the sale including Bron Ellis, Sweetfield, Mt. Moriac, who was thrilled with the 100 per cent clearance of the five rams she offered and Milton Savage was extremely happy with the result of his offering, which included the sale topping ram.

At the end of the day, 35 rams sold from 64 offered, av. \$763.

(Struan Pearce, Stock & Land)

- 35 of 64 rams sold to \$2500, av. \$763
- Rams to \$2500 at blue ribbon Corriedale sale

Show Results

ASBA Show Bendigo

Corriedales were exhibited at the 2012 Australian Sheep and Wool Show Bendigo in July.

Ram judge: Gordon Gilbert (New Zealand)

Ewe judge: Noel Price (VIC)

Schools judge: Jeff Prell (NSW)

Shorn judge: Craig Mitchell (VIC)

Major awards:

Supreme Champion Corriedale (Wettenhall Perpetual Trophy)
Quamby Plains

Most successful exhibitor (The Late J.G. Guthrie Perpetual Cup)

Liberton

The Goxhill Perpetual Trophy (Most Successful in Shorn Classes)

Liberton

Grand champion ram
Quamby Plains

Senior champion ram
Quamby Plains

Reserve senior champion ram
Stanbury

Junior champion ram
Sweetfield

Reserve junior champion ram
Liberton

Grand champion ewe
Loddon Park

Senior champion ewe
Loddon Park

Reserve senior champion ewe
Sweetfield

Junior champion ewe
Liberton



**Quamby Plains supreme champion Corriedale, 2012 Australian Sheep and Wool Show, Bendigo.
(Photo – Wayne Jenkins)**

Show Results

Reserve junior champion ewe
Loddon Park

Champion shorn sheep
Loddon Park

Reserve champion shorn sheep
Blackwood

Supreme interbreed longwool group
2nd Liberton

Special Classes

Best Corriedale Sheep exhibited by a school – Sponsored by Liberton Corriedales
1st EMC

School Group 1 Ram and 1 Ewe any age – Sponsored by B Hamblin-Toolleen:
1st Woodleigh 2nd EMC 3rd Woodleigh

R.E Wettenhall trophy of the Best Head on a Corriedale Ram at the show:
1st Sweetfield

Corriedale group ram and ewe under 1-1/2 years old and ram and ewe over 1-1/2 years old from ordinary classes:
1st Liberton 2nd Woodleigh 3rd Ballarat Grammar

“Loddon Park” Trophy – Group 1 Ram and 2 Ewes under 1-1/2 years old bred by exhibitor:

1st Liberton 2nd Liberton 3rd Woodleigh

Ken Smith Memorial Trophy for sires progeny group. 3 sheep rams or ewes at any age the progeny of 1 sire:
1st Sweetfield 2nd Ballarat Grammar 3rd Liberton

C.B.T Gates Memorial perpetual trophy – for the best first year exhibitor:
1st Wattle Glen 2nd Wooloonoon

Best March shorn ram:
Stanbury

Best March shorn ewe:
Loddon Park

Royal Geelong Show

Gavin Wall was the judge of the Corriedale section at the 2012 Royal Geelong Show on October 18-21.

Major awards were:

Supreme Corriedale Exhibit
Sweetfield

Champion ram
Liberton

Reserve champion ram
Sweetfield

Champion ewe
Sweetfield

Reserve champion ewe
Sweetfield

Champion lamb
Sweetfield

Reserve champion lamb
Sweetfield

Group under 1-1½ years (one ram and two ewes)
Liberton

Most successful exhibitor
Sweetfield

Best ram fleece (Guy Wettenhall Perpetual Trophy)
Sweetfield

Reserve ram fleece (Stanbury Corriedale Trophy)
Liberton

Best ewe or wether fleece (‘Stanbury’ Corriedale Perpetual Memorial Trophy)
Jim Venters, Liberton

Best spinning fleece over all fleece sections (donated by Geelong Handweavers & Spinners Guild)
Sweetfield

Show Results



The senior winners of the junior judging competition, 2012 Royal Geelong Show. Daniel Mosele (third place) is flanked by Casey Lees and Ashlin Bailey who won equal first.

Bron Ellis and Jim Venters co-ordinated but there were many helpers from the schools.

The winners in the senior competition were as follows:

- Equal 1st** Casey Lees, Elisabeth Murdoch College
Ashlin Bailey, Elisabeth Murdoch College
- 3rd** Daniel Mosele, Woodleigh School

The winners in the junior competition were as follows:

- 1st** Nadia Coburn, Woodleigh School
- 2nd** Madeleine van Basten Batenburg, Woodleigh School
- 3rd** Ella Boyle, Woodleigh School

Junior Judging – Royal Geelong Show

Over 60 students took part in the junior judging competition held on Saturday morning at 9.30am at the 2012 Royal Geelong Show.

The seniors competed in the Englewood Park competition while the juniors entered the Corriedale competition.



Junior judging winners at the 2012 Royal Geelong Show Madeleine van Basten Batenburg (left) and Nadia Coburn.

Ballarat Sheep Show

Judge of the Corriedale section at the 2012 Ballarat Sheep Show on Sunday July 29 was Noel Price, Mooralea, Broadwater, Vic.

Major awards were:

Champion interbreed longwool ewe
Loddon Park

Reserve champion interbreed longwool ram
Loddon Park

Champion ram
Loddon Park

Reserve champion ram
Stanbury Corriedales WCH

Champion ewe
Loddon Park

Reserve champion ewe
Ballarat Grammar

Aggregate Winner
Ballarat Grammar

Hamilton Sheepvention

Richard Archer “Quamby Plains” Hagley, Tas was the judge at the 2012 Hamilton Sheepvention, Vic on August 6 while Ralph Speirs, Warrnambool, Vic judged the shorn classes.

Major awards were:

Supreme champion ram
Liberton

Supreme champion ewe
Sweetfield

Senior champion ram
Liberton

Reserve senior champion ram
Croydon

Senior champion ewe
Sweetfield

Reserve senior champion ewe
Ballarat Grammar

Supreme interbreed longwool ram
3rd Liberton

Supreme interbreed longwool ewe
2nd Sweetfield

Supreme interbreed longwool group
2nd Sweetfield



Liberton supreme champion ram at the 2012 Hamilton Sheepvention.
(Photo – Wayne Jenkins)

Show Results

(Hamilton Sheepvention results continued)

Junior champion ram
Sweetfield

Reserve junior champion ram
Liberton

Junior champion ewe
Sweetfield

Reserve junior champion ewe
Liberton

Open Class champion ewe
Liberton

Champion March shorn ram
Croydon

Reserve March shorn ram
Stanbury West Cloven Hills

Champion March shorn ewe
Sweetfield

Reserve March shorn ewe
Sweetfield

Open Class champion ewe
Liberton

Champion shorn ram
Stanbury West Cloven Hills

Reserve shorn ram
Croydon

Champion shorn ewe
Sweetfield

Reserve shorn ewe
Liberton

Champion unhoused ram
Haven Park

Reserve champion unhoused ram
Croydon

Champion unhoused ewe
Ballarat Grammar

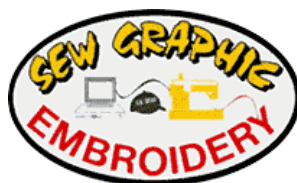
Most successful exhibitor (unhoused classes)
Haven Park

Most successful exhibitor
Liberton

OFFICIAL SPONSORS AND ALLIANCES

SEWGRAPHIC EMBROIDERY

Colin McAlpine,
237 Campbell Street,
Swan Hill, Vic 3585
Phone: (03) 5032 2303
Email: sales@sewgraphic.com.au



WEB MASTER

Stephen Davey,
Pagination Design Services Pty. Ltd,
14 Albert Street,
Geelong West Vic 3218
Phone: (03) 5223 2494
Email: smd@pagination.com.au



WFI

Web: www.wfi.com.au



Front cover:

Brenton Lush meets royalty – HRH the Prince of Wales (Prince Charles) who is the patron of the Campaign for Wool, at a wool industry function, Sorell, Tasmania. Brenton is the one on the left. See editorial on page 6. (Photo – courtesy Arthur Edwards MBE, Royal Photographer for the Sun, London, since 1977)

DISCLAIMER

The Australian Corriedale Association Inc. reserves the right to accept or reject any material submitted for publication in the Australian Corriedale newsletter.

Opinions expressed in the Australian Corriedale newsletter are not necessarily those of the Association or its newsletter editor.