

THE AUSTRALIAN CORRIEDALE JOURNAL JUNE 2014

# CORRIEDALES

THE ULTIMATE DUAL PURPOSE BREED SINCE 1874



WORLD CONFERENCE 2014 - Argentina





# Leamington

C O R R I E D A L E S

*75 years of commercial excellence*



**Mission Statement:**

*"To produce highly  
productive, profitable  
sheep that offer  
superior genetics  
backed by an industry  
leading self-replacing  
commercial flock"*

*Production, Performance, Profitability*

**Stuart Burbury**

"Leamington" York Plains, Tasmania 7120 ■ P 03 6255 5297 ■ M 0428 253 201  
E [leamingtoncorriedales@bigpond.com](mailto:leamingtoncorriedales@bigpond.com) ■ Like us on Facebook



# Federal President's Report

**Ian M MacKinnon**

President, Australian Corriedale Association

## The Australian Corriedale Association congratulates Argentina on hosting the 15th World Corriedale Congress.

Corriedales continue to maintain their position in the Australian sheep flock due to their dual purpose nature and their role as a self-replacing flock. The strength of the Australian lamb market has meant that Corriedales have been able to take full advantage of these good prices.

Lambs weighing 16 – 20 kg have at the time of writing this report been as high as \$US558c/kg. At this same time last year the prices we were receiving were \$US347c/kg. Corriedale ewes have been selling for \$US121/head, surplus sheep 18 – 24k have been selling for \$US349c/kg compared with a year ago of \$US163c/kg. These good prices have helped to underpin most breeding operations.

The CD (Corriedale) brand continues to gain in recognition with the wool buyers, which helps to differentiate Corriedale wool from quite large offerings of Crossbred wool. The characteristics such as softness, well defined crimp, bright colour and freedom from pigmented fibres have helped in this recognition process. CD is now recognised by the Australian Wool Exchange (AWEX) code of practice as the brand for pure Corriedale wool. This differentiation has allowed a small premium to be attracted for CD branded wool in the market place.

The prices received for Corriedale wool have improved slightly over the last 12 months. 26 micron Corriedale wool has seen a small gain compared with last year (1.5%), this year receiving \$US710c/kg clean

compared with last year \$US700c/kg clean. 28 micron Corriedale wool has seen an increase of 13.5%, this year achieving \$US626c/kg clean compared with last year \$US551c/kg clean. A 13.6% increase has been observed in 30 micron wool, this year receiving \$US587c/kg clean compared with last year \$US516c/kg clean.

The Corriedale breed continues to come under pressure from exotic breeds of sheep and the introduction of meat Merinos. To differentiate the Corriedale in the market place breeders have sought the development of a Performance Corriedale Group. This group are testing highly ranked Corriedale sires identified by LAMBPLAN amongst member flocks. This will establish excellent genetic links between member studs and the Corriedale breed generally. This approach will increase productivity and profitability as gains in kg/ha of wool and kg/ha of meat are realised.

Corriedale breeders all over Australia are striving to improve the Breeds' competitiveness. This is evident at the state shows and especially at the Australian Sheep and Wool Show (held in Bendigo, Victoria) by the very large showing of Corriedale sheep from New South Wales, South Australia, Tasmania and Victoria. In 2013 there were 19 exhibitors which included 6 schools with very enthusiastic participation.

The Corriedale breed is able to approach the future with confidence. On behalf of the Australian Corriedale Association I extend my best wishes for a successful Congress in Buenos Aires, Argentina.



## Contents

Federal President's report	1
Aus Corriedale Office Bearers	2
Tasmanian report	3
Victorian report	4
South & West Australian report	6
Performance Corriedales Australia by Peter Blackwood	8
Dubbo Landmark Sheep Show by Richard & Jane Carter	10
Corriedales looking to the future By Richard Smith	12

### AUSTRALIAN CORRIEDALE ASSOCIATION INC

Mailing address:

PO Box 632, Balwyn  
Victoria, Australia, 3103

Tel: (03) 9817 6714

Email: [secretary@corriedale.org.au](mailto:secretary@corriedale.org.au)

Website: [www.corriedale.org.au](http://www.corriedale.org.au)

Inc No: A0032338V ABN: 61 163 797 235

Editors: Brenton Lush & Peter Weston

Publisher: Out of Square Media

Principal: Karen Burbury

Senior Graphic Designer: Roxanne Viney

Tel: (03) 6255 5297

Email: [outofsquare@bigpond.com](mailto:outofsquare@bigpond.com)

Printing: Woolston Printing

Out of Square Media specialises in publishing magazines, producing journals and newsletters, graphic design, marketing strategies, main stream media planning and buying and social media consultancy. One of our team members is based on a Corriedale Stud in Tasmania!

### DISCLAIMER

The Australian Corriedale Association Inc. reserves the right to accept or reject any advertisement submitted for publication in this journal. While every effort is made to publish advertisements as ordered, no responsibility is taken for failure of an advertisement to appear as ordered. Opinions expressed in the ACA Journal are not necessarily those of the ACA or it's editors.

This publication is for information purposes only. The publisher and it's agents or employees shall not be liable for any loss or damage suffered by any person as a result of reliance on any contents hereof, whether such loss or damage arises from the negligence or misrepresentation or any act or omission of the publisher or it's agents.



# Corriedale office bearers 2013 - 2014



## President

Ian M MacKinnon, TAS  
Phone: (03) 6331 5253 & 0419 359 491  
Email: ian.mackinnon2@bigpond.com

## Vice-President

Graham Jenke, SA  
Phone: 0428 696 031  
Email: wattleglencorriedales@gmail.com

## Treasurer

Wally Jenkin, SA.  
Phone: (08) 8738 7259 & 0407 612 844  
Email: leghnayook@bigpond.com

## Secretary

Peter Weston, VIC  
Phone: (03) 9817 6714  
Email: secretary@corriedale.org.au

## ACA Auditor

Jim Gough, Gometra, Branhholme, Vic.  
Email: coora8@bigpond.com  
Phone: (03) 5578 6267

## Other Councillors:

Richard Archer, TAS  
Phone: (03) 6392 2322 & 0438 922 321.  
Email: archer@quambypains.net  
Peter Blackwood, TAS  
Phone: (03) 6397 6333 & 0418 134 800  
Email: peter@tpjones.com.au

Nicholas Cole, VIC  
Phone: (03) 5593 9278  
Email: stanbury@gateways.bbs.com.au

Bronwyn Ellis, VIC  
Phone: (03) 5266 1562  
Email: sweetfield@corriedale.org.au

Rick Hoolihan, NSW.  
Phone: 0428 733 528  
Email: rickhoolihan@gmail.com

Brenton Lush, SA.  
Phone: (08) 8598 5281  
Email: bjlush@activ8.net.au

Tony Manchester, NSW.  
Phone: (02) 6384 4231 & 0428 844 231  
Email: tmanch@bigpond.net.au

Charles Prell, NSW.  
Phone: (02) 4848 1244 & 0427 224 839  
Email: cprell@wirefree.net.au

Milton Savage, VIC  
Phone: (03) 5340 3592 & 0418 534 037  
Email: comptonhouse@activ8.net.au

## State Branches:

### NSW

**Chairman:**  
Tony Manchester, Kingsvale.  
Phone: (02) 6384 4231

### Secretary

Rick Hoolihan, Rydal.  
Phone: 0428 733 528 & (02) 6355 6232

## Treasurer:

Charles Prell, Crookwell.  
Phone: (02) 4848 1244 & 0427 224 839

## VICTORIA

### Chairman:

Bronwyn Ellis, Vic  
Phone: (03) 5266 1562

### Secretary / Treasurer:

Peter Weston, Balwyn.  
Phone: (03) 9817 6714

## SOUTH AUSTRALIA & WESTERN AUSTRALIA

### Chairman:

Brenton Lush, Inman Valley.  
Phone: (08) 8598 5281

### Secretary / Treasurer:

Di Jenke, Strathalbyn.  
Phone: 0428 696 031

## TASMANIA

### Chairman:

Ian MacKinnon, Conara.  
Phone: (03) 6331 5253 & 0419 359 491

### Secretary / Treasurer:

Dianne MacKinnon, Conara.  
Phone: (03) 6331 5253 & 0408 915 355

## Stanbury WCH12- 219-219



## CHAMPION RAM 2013

Bendigo, Ballarat, Hamilton  
Judge: James Sidey

stanbury@gatewaybbs.com.au  
www.stanbury.com.au  
Like us on facebook at:  
Stanbury Corriedales at WCH



Flock No. 2382



Est. 1998



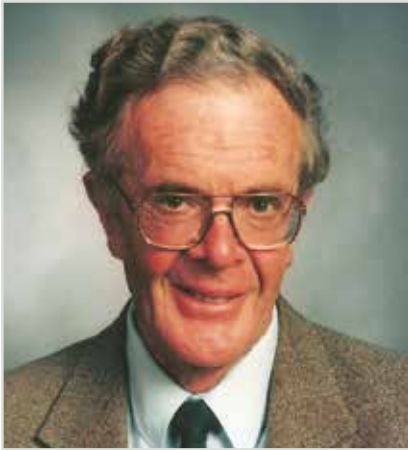
## BREEDING EXCELLENCE

*Producing true to type Corriedales delivering premium carcase and heavy cutting fleeces*

**Bron Ellis** Mount Moriac, Victoria T: (03) 5266 1562 M: 0400 871 693  
E: sweetfield@corriedale.org.au www.corriedale.org.au/sweetfield

# Tasmanian Report

Andrew Nicolson



The two newest Tasmanian Corriedale studs both achieved very satisfactory results in the show ring and with ram sales during 2013.

Claire & Peter Blackwood exhibited an extremely impressive team of ram hoggets at Campbell Town and later at Bendigo A.S.B.A. Shows with very satisfactory results.

They showed commendable initiative by taking five of their young rams to Sheepvention "The two newest Tasmanian Corriedale studs both achieved very satisfactory results in the show ring and with ram sales during 2013. Claire & Peter Blackwood exhibited an extremely impressive team of ram hoggets at Campbell Town and later at Bendigo A.S.B.A. Shows with very satisfactory results. They showed commendable initiative by taking five of their young rams to Sheepvention at Hamilton where they sold extremely well. The Blackwoods have recently purchased Harland Rise, near Evandale, which will give them scope to expand their stud operation.

Stuart Burbury won Champion Ewe and Most Successful Exhibitor awards at Campbell Town. His rams met a ready demand at the November Field Day and Ram Sale.

Corriedales at 2013 Campbell Town Show were judged by Tony Manchester of New South Wales. Awards were evenly distributed between the four exhibitors. The Streanshalh Champion Ram also won the Prell Trophy for Ram with Best Sire's Fleece, thus winning this trophy outright after 35 years of competition with twenty exhibitors winning at least once. Andrew Nicolson won for the fourth time in 1996 and it has taken him 17 years to attain the necessary fifth victory. Interestingly, a different Streanshalh ram won a special award made by the judge at Bendigo for Ram with Best Sire's Fleece.

After a difficult Autumn and Winter in 2013, seasonal conditions altered dramatically with an excellent Spring and promising Autumn this year ensuring the 2013 drop of hoggets are coming forward in top condition.

Prices for ewes were generally lower than in recent years, but the Burbury family found a ready demand for their usual superb drafts of ewes at the Tunbridge sale early in January.

**Stop Press:** Bron Ellis judged at the 2014 Campbell Town Show which saw Richard Archer exhibiting the champion and reserve champion rams and best sires fleece; Stuart Burbury the champion ewe; Ian and Di MacKinnon the junior champion

## GRAND CHAMPION CORRIEDALE RAM CANBERRA AND SYDNEY 2014

*Roseville Corriedales have been breeding quality rams for over 40 years by the Manchester family from their Roseville property in the South West Slopes of NSW*

Find us at the Dubbo Sheep Show May 2014  
Semen available



Tony Manchester -  
Ph: 02 6384 4231  
Mob: 0428 844 231  
John Manchester -  
Mob: 0409 329 335

[www.rosevillecorriedales.com.au](http://www.rosevillecorriedales.com.au)  
[www.facebook.com/rosevillecorriedales](https://www.facebook.com/rosevillecorriedales)



# Victorian Report

**Darryl MacDonald**

(Retiring) Victorian State President



The VSC has continued to be involved with several events and shows.

The main event is the Australian Sheep Breeders Association (ASBA) sheep & wool show in Bendigo, which is the premier show for Corriedales in Victoria and Australia.

Corriedale breeder, Peter Baker of LODDON PARK is the current President of the ASBA. The 2013 ram judge was Jim Sidey from New Zealand, ewe judge was Jan Hunt and shorn classes were judged by Ralph Speirs. STANBURY at WCH won the supreme longwool sheep of the show with LIBERTON winning supreme longwool group. Corriedales have won interbreed champions at: Geelong Royal Show, Ballarat Sheep Show and Clunes, Daylesford, Maldon, Tyrendarra and Berwick Ag. Shows, and have regularly won these titles over recent years. LODDON PARK also won the Interbreed Longwool Champion ram award at Adelaide Royal.

Corriedales were again displayed at Elmore Field Days and at Ballarat Rural Living Expo where BALLARAT

GRAMMAR flew the flag. Ram sales were held at MOORALEA and by HAVEN PARK/CROYDON. STANBURY at WCH hosted the Blue Ribbon sale where 6 studs took part. A working bee was held at Bruce Hamblin's TOOLLEEN to clean up after a fire had destroyed fencing. A good turnout of breeders and schools ensured a successful clean up as well as a good social day.

The school studs continue to be a high point for Victorian Corriedales, with more studs starting each year. With prime lambs, mutton and Corriedale wool all making reasonable returns, the future of this self-replacing, dual-purpose breed seems assured.

The Victorian State Committee AGM held recently on 2nd May resulted in Bron Ellis elected as state president; Bruce Hamblin as senior vice-president; Matt Dickinson as junior vice-president. Victorian federal councillors remain as Nick Cole, Bron Ellis and Milton Savage, while Peter Weston is secretary/treasurer.

## CDH

### CORRIEDALE HILLS

Flock No. 106 Est. 1926

#### BREEDING PRACTICAL, PRODUCTIVE CORRIEDALES

- Open faced sheep with clean wool & a strong frame
- Also home to the newly formed Y-not Stud.

#### Corriedale Hills and Y-not:

Brenton & Jo Lush  
Phone: +61 8 8598 5281  
Email: [bjlush@activ8.net.au](mailto:bjlush@activ8.net.au)  
Postal: PO Box 2 Inman Valley, South Australia, Australia, 5211

### LUSHFORD CORRIEDALES

Flock No. 2416 Est. 2012

#### SELECTING FOR HIGHER REPRODUCTION & GROWTH

- 1<sup>st</sup> & 2<sup>nd</sup> ranked 2013 drop rams on the LAMBPLAN Dual Purpose index.
- Bred from Coora & Wye bloodlines.

#### Lushford Corriedales:

Royce Pitchford  
Phone: +61 418 420 018  
Email: [royce.pitchford@gmail.com](mailto:royce.pitchford@gmail.com)  
Postal: PO Box 440, Echunga, South Australia, Australia, 5153



BRUCELLOSIS ACCREDITED



WORKING TOGETHER

# Quamby Plains

Est. 1917



- **Performance Corriedales**
- **National LAMBPLAN recorded**
- **Renowned for -**
  - High Lambing percentages**
  - Great heads & structure**
  - High Yielding carcasses**
- **Special selection emphasis for**  
**LOW MICRON SOFT WHITE WOOLS**

**Supreme Champion at Australian Sheep &  
Wool Show, Bendigo 2005, 2008, 2011 and 2012**





# South and West Australian Report

**Brenton Lush**

President SA / WA Branch



One of the big advantages of being involved in agriculture in Australia is the sheer size of the country.

**Under most circumstances there is someone, somewhere having a reasonable season and some commodity doing well with their markets to keep the agriculture sector moving forward.**

In the livestock sector, this diversity helps to keep markets supplied on a year round basis, as processors will truck sheep from Western Australia (WA) to South Australia (SA) or cattle from Northern WA to Victoria to fit markets. This all came unstuck for the beef industry a few years ago when the government made a snap decision to stop shipments of live cattle to Indonesia. This, combined with a drought in Queensland, meant that enormous numbers of Northern cattle were being sent south, thus reducing market capacity in the Southern areas.

I write this because SA and WA have merged their Corriedale Association branches. If you look at a map of Australia, we now cover about a third of the country, although to be realistic the sheep industry only operates in the southern portion of both states, and the Corriedale breed is generally restricted to the higher rainfall areas on the coastal margins. With only a handful of studs in WA, they came under the administrative banner of SA. But there are still new studs being created. For example, the WYE stud of Tony and Jan Hunt is in the process of being dispersed. But breeders are taking the opportunity to use these sheep to start or improve their own studs.

Over recent times, there has been a trend in the lamb industry to ewe flocks based on what are called 'maternal composites', where cross breeding is king. This creates a flock with significant variation in it, but at present industry doesn't seem to want to reward the uniformity provided by a straight breed like Corriedales. While the tradition for Corriedales has been as a pure breed, perhaps crossed to a terminal sire for lamb production, we have had to ask the question, does the Corriedale have a place in a cross breeding flock?

There have been three strategies where Corriedales have been used over other breeds. Firstly, over a Merino ewe to produce a comeback type sheep, with 22 – 25 micron wool and producing a good lamb producing ewe that suits higher rainfall areas. Secondly, over a first cross ewe (Border Leicester X Merino) so that producers can breed a self replacing sheep still with good, even improved, lamb production, while increasing wool production and quality. But above all else, getting out of the roller coaster ride that producers get on when trying to source buy-in ewes. And thirdly, over strong wool composites (over 32 micron) to reduce wool micron and improve skin values. So the Corriedale still has several roles to play in our sheep industry.

Several studs, including WYE, WATTLE GLEN, CORRIEDALE HILLS and LUSHFORD are supporting shows in SA, most notably Adelaide and Mt Gambier, while in WA, INLET VIEWS is a strong show supporter. There are a good number of younger breeders involved in the breed, so together with multiple possible markets, there is optimism for the future for Corriedales.





# BILLIGABOO CORRIEDALES

*Flock 239*

*Sheep built on the past with a constitution to last*



## **Billigaboo Abbey**

**Supreme Champion Ewe** Canberra 2012 & 2013

**Champion Ewe** Sydney 2012 & 2014

**Champion Ewe** Dubbo 2013

## **Billigaboo Dynamo (back)**

**Champion Ewe** Sydney 2013

---

## **Billigaboo Errol (below)**

**Reserve Champion** Sydney 2013

## **Billigaboo Dexter**

**Champion** Sydney 2013

**Reserve Champion** Canberra 2013



## **Billigaboo Dexter (from left)**

**Champion** Sydney 2013

**Reserve Champion** Canberra 2013

## **Billigaboo Elsworth**

**Reserve Champion** Sydney 2014

## **Billigaboo Devil**

**1st place: 2 yrs and over** Canberra 2014

**1st place: 2 yrs and over** Sydney 2014

*Traditional Corriedales bred for constitution, fertility and size with lustre, loft and heavy lock in the wool. Our wool is marketed internationally with E.T.C. Corriedales.*



[www.billigaboo.com](http://www.billigaboo.com)

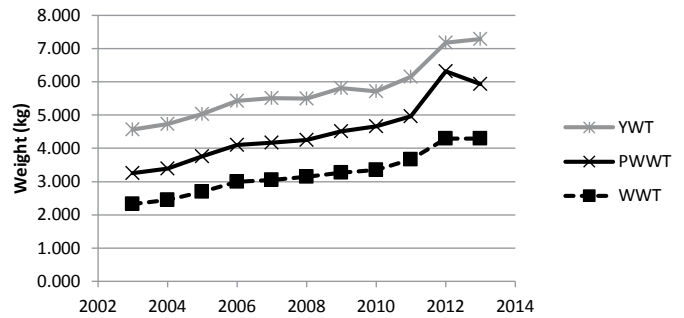
Richard and Jane Carter Ph 0428 483 320 Email: [carcorp2@bigpond.com](mailto:carcorp2@bigpond.com)

# Performance Corriedales Australia

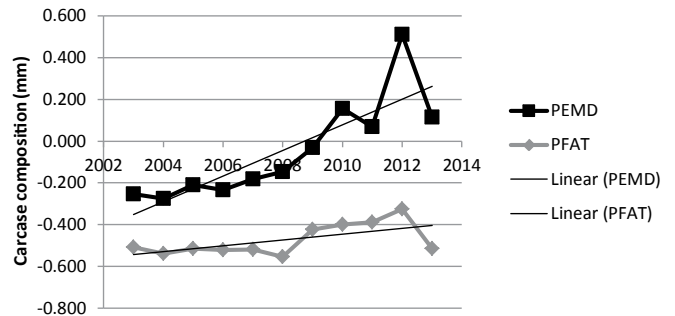
**Peter Blackwood**

Chairman, Performance Corriedales Group

## Growth



## Carcase



Australia's group of like minded breeders have continued to meet annually and use genetic links to improve the commercial value of our Corriedale sheep and the accuracy of our data.

In the early days of our planning, we identified the key traits that would drive this improvement as : Number of lambs weaned, Weaning weight, and carcass quality (fat and muscle).

The Corriedale members of LAMBPLAN have demonstrated ongoing genetic gain for these traits that have been focused on. The use of Australian Sheep Breeding Values (ASBVs) has allowed the breeders to

benchmark their animal's performance across the group and have a better understanding of the potential genetic merit of individual animals. This in turn allows for a greater accuracy in breeding decisions, meaning the animals perceived by the breeder to be of higher merit actually breeds on to produce high merit progeny. To produce ASBVs for the purpose of estimating an animal's genetic merit, the breeders have had to meticulously measure and record the performance of animals and their pedigree details.

The key driver of increased rates of genetic gain has been the use of the LAMBPLAN program which allows the breeders to make more informed breeding decisions. The breeders

record a mass of information on each individual animal and the LAMBPLAN analysis utilises this information to produce ASBVs. ASBVs make the best use of information available to estimate the true genetic merit of individual animals. This increased accuracy of selection, coupled with a clear breeding objective has resulted in an ongoing and increased rate of genetic gain and is especially important for traits like number of lambs weaned, which is of high economic value but difficult to select for because it has a low heritability.

In the last 5 years the group has increased the overall index by \$5/ewe joined and this has been achieved by increasing number of lambs weaned



## Neechy Park Stud

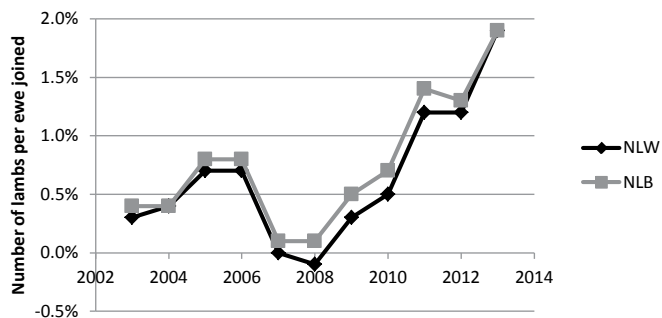
'Corriedale Stud Since 1948'

Stud is kept to breed large formed strong to medium self replacing stud

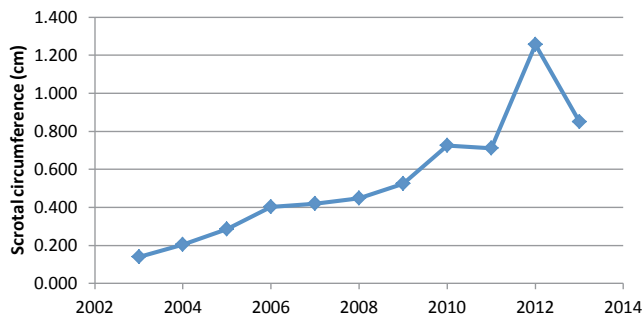
Phone: Graham Gordon +61 8 87389218  
Email: maureen.gordon@hotmail.com



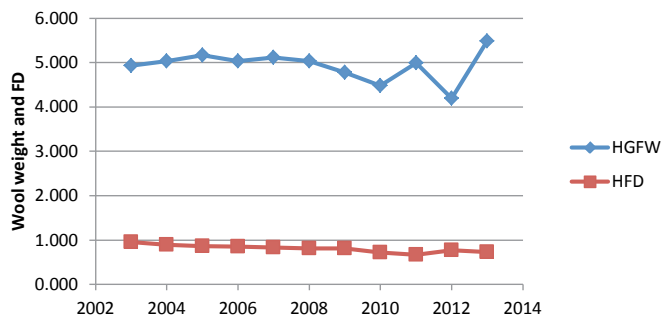
## Reproduction



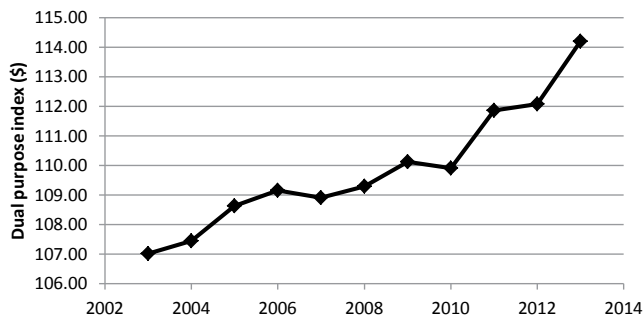
## Male puberty and capacity



## Wool



## Overall performance



by 2%, lamb live weight by 2kg and these lambs are earlier maturing and have more muscle. All this has been achieved while maintaining wool production and quality. There are individual sheep that are well recorded and clients can purchase semen from these to make faster gains than represented by the change in the group average.

The Australian Performance Group, together with members of New Zealand's SIL (Sheep Improvement Ltd) group have also continued our across Tasman analysis so genetics can be traded with confidence in the genetic performance of each animal. Since this ground-breaking work to routinely share data was done by

Australian and New Zealand Corriedale breeders, other breeds have followed with their own analyses.

At our last Annual General Meeting in Normanville, South Australia, our group hosted several members from New Zealand. This has helped in strengthening the direction and resolve of the Performance Corriedales Group in making the Corriedale Breed a commercially viable animal, in today's increased business and performance recorded farms. We will be meeting to continue this alliance in New Zealand, before Easter 2015.

Over recent times, two of the foundation members of the Performance Corriedales group have

dispersed their studs, these being the COORA stud of Jim and Midge Gough and the WYE stud of Tony and Jan Hunt. While it is regretful to see these studs disperse, it has given an opportunity for other studs to begin with quality stock, or to improve the quality of their own stock. Some of these studs, such as LUSHFORD, have become members of the group, and the group has also seen growth through the membership of older, established studs such as HAVEN PARK and SWEETFIELD.

We look forward to further growth and improvement in the years ahead.

**WATTLE GLEN  
CORRIEDALES TRUE  
ALL PURPOSE SHEEP**

**INSPECTION INVITED ANY TIME**  
**Contact: Graham & Di Jenke**  
**520 Gemmell Rd, Strathalbyn SA 5255**  
**Email: wattleglencorriedales@gmail.com**

OJD MN3 Bruc Acc



# Dubbo Landmark Sheep Show

May 23rd - 24th 2014

by Richard & Jane Carter

The weather was perfect. We were given a sunny corner of the shed and seventy one Corriedale sheep, prepared and primed, trotted off their trailers ready to do battle.

**Badgally, Billigaboo, Eskbank, Merrigal, Roselea, and Tymec Studs were represented.**

Our judge was Mr Bill Carroll from the Redbank Stud, Molong and his Associate Judge, in the ram section, was John Burrows from New Zealand. John was out here as part of the New Zealand & Australian Youth Ambassador Program. Peter Coles, from Trinity College, Goulburn, was the Associate Judge in the Ewe section.

Our President, Tony Manchester was making sure it all ran smoothly. And with Rick Hoolihan and Henry and

Annette Thompson as stewards we pulled our weight with the organisers.

We were delighted to have the three schools, St Gregory's College, Badgally Stud, Lithgow High's Eskbank Stud and Trinity College Goulburn turn up, in force, to parade sheep for everyone and then compete themselves in the School Sections and then the Handlers and Judging Competitions on the Sunday. Trinity College are not registered as a stud as yet, but we are hoping it is only a matter of time.

The Annual General Meeting on Friday night, under the efficient leadership of

our President, Mr Tony Manchester, saw the executive re-elected unopposed. At the meeting, it was decided to form a subcommittee to explore the effect social media might have on marketing our ideas for the 100th Anniversary celebrating the start of the Australian Corriedale Association on 28th July 1914. Harnessing all this young and enthusiastic talent seemed a good idea and the immediate feedback we received from the students was very encouraging. This subcommittee will be headed by Ed Stefanski from Badgally Stud, St Gregory's College.







At the judging, some familiar faces were there in support, John Armstrong, Alex and Jo Carroll, Margie Carroll and Neville Mangelsdorf showing their interest is still strong.

The dinner was held at the RSL Club on the Saturday night with fifty two people attending. We would like to thank the Carroll family, from both the Beulah and Redbank Studs and John Armstrong, Yullundry Stud, for their beautiful trophy donations. They scoured old family Corriedale trophies and antique shops for beautiful silver trays, a tea pot and a jug to be awarded on the night. Our thanks to our Social Director, Henry Thompson, for yet another wonderful night.

Billigaboo, Flock 239, won the Champion Woolly Ram, The Reserve Champion Woolly Ram and the Champion Woolly Ewe, the pen of two ewes and the most successful exhibitor.

Tymec, hot on their heels won the Champion Shorn Ram and the Reserve Champion Woolly Ewe and the pen of three. Points for Most Successful Exhibitor were even and Billigaboo won on a countback.

Rick Hoolihan, Roselea, Flock 2393, took out the Champion and Reserve Champion Shorn Ewe and the Reserve Champion Shorn Ram and the Corriedale Perpetual Shield, was won by David Thompson for St Gregory's College.

St Gregory's came second out of 15 schools in the Googunyah Shield. Jack Finch came first in the Merino Handling and Peter Coles from Trinity College won the meat sheep Junior judging section. It was a pleasure to see Jon Abbotts team from Lithgow High once again competing. Eskbank won the Novice section.



**Opposite**

**Left:** Richard Carter receiving the most successful exhibitor trophy from Alex Carroll.

**Right:** David Thompson receiving the Champion Shorn Ewe Trophy from John Armstrong

**Above**

**Top:** Young challenging the old guard David Thompson and Richard Carter with Tony Manchester with the Supreme Trophy

**Middle:** Judge Bill Carroll flanked by John Burrows from New Zealand on the left and Peter Coles on the right

**Bottom:** Billigaboo Abbey Grand Champion Ewe (left) and Billigaboo Elsworth Supreme (right)





# Corriedales looking to the future

By Richard Smith

## FAST FACTS

- The Australian Corriedale Association is this year celebrating its centenary and is promoting Corriedale sheep as a truly dual purpose breed that produces heavy cutting bright fleece.
- There was a large Corriedale representation in the judging ring at this year's Sydney Royal Easter Show.
- A special function celebrating the Association's centenary was held at the Show, attended by stud breeders, commercial producers, AWI representatives and students.

### **This year is a big year for the Corriedale breed in Australia with the Australian Corriedale Association celebrating its 100 year anniversary.**

The Corriedale breed was developed in the latter quarter of the 19th century to meet a demand for a dual purpose animal with good meat characteristics and commercial wool production. The breed simultaneously evolved in both Australia and New Zealand by selectively breeding from cross bred progeny of pure Merino and Lincoln sheep.

The centenary celebrations began at this year's Sydney Royal Easter Show where there was a large Corriedale representation with 68 sheep in the judging ring with all of the original major bloodlines on show.

The Corriedale section was judged by Brenton Lush of Inman Valley on the Fleurieu Peninsula of South Australia, who is the non-Merino breed

representative on AWI's Industry Consultative Committee. As an indication of the young talent within Australia's Corriedale sheep industry, Mr Lush was assisted in his judging by 18 year old associate judge Edward Thomas from Cooma, NSW who is a former student of St Gregory's College Campbelltown that has its own Corriedale stud.

A special function celebrating the Association's centenary was held, after the judging, attended by stud breeders, commercial producers, AWI representatives and students.

The Chairman of the NSW branch of the Australian Corriedale Association, Tony Manchester of 'Roseville', Kingsvale that won the Grand Champion Corriedale Ram at this year's show, greeted guests and spoke of his confidence for the future of breed.

"It's been exciting to have so many Corriedale breeders here at the show to share their views with the new generation and look at the result of one hundred years of breeding. The students here today are the people who will be guiding the breed into its second century.

"Those producers that have persisted with the traditional Corriedale breed are reaping the rewards. High lamb and mutton returns combined with heavy wool cuts continue to ensure that stronger wools more than hold their own in comparison with the finer end of the market.

"The industry faces a changing world where the cost of energy, the environment and the climate are squarely on the agenda. This opens all sorts of new possibilities for wool, given its natural benefits and credentials."

Richard and Jane Carter of 'Billigaboo', Goulburn that won the Grand Champion Corriedale Ewe at the show, and who helped organise

the function, spoke about the history of the breed and the role that the Corriedale fleece played in supplying the uniforms and overcoats for soldiers in World War One, World War Two and the Korean War.

Looking to the future, Richard emphasized the lustre and loft of Corriedale fleece. He then showed the audience two prototype knitted wraps that had been made using 28-29 micron Corriedale wool from his 'Billigaboo' property. While Richard and Jane focus on growing the wool, their daughters Georgie Twomey and Sophie Ellis are overseeing the production and marketing respectively.

"A trial production run of 200 wraps is under way," Mr Carter said. "Our aim is to have a product that showcases the quality of Corriedale wool – it's got a definite character. We want to not only promote the luxury of Corriedale wool but also highlight its provenance and the success of the breed from which it is sourced."

More information: [www.corriedale.org.au](http://www.corriedale.org.au)

## Advertisers Index

Australian Wool Network	IBC
Billigaboo	page 7
Corriedale Hills & Lushford	page 4
Glen Esk	BC
Leamington	IFC
Neechy Park	page 8
Roseville	page 3
Quamby Plains	page 5
Stanbury WCH	page 2
Sweetfield	page 2
Wattle Glen	page 9



# Your brightest choice in wool marketing.

## If you're looking for a wool marketing specialist with direction and a clear vision - the choice has never been brighter!

At Australian Wool Network wool is our specialty, it's our core business and our passion. Our team of dedicated wool specialists can help you choose which marketing solution/s will best suit your business and help you to maximise the returns from your wool clip.

- ◆ Extensive range of wool marketing solutions: forward marketing - direct to mill - auction
- ◆ Network of strategic alliances: growers - exporters - top makers - spinners - weavers - retailers
- ◆ Clip specific wool preparation advice to maximise returns
- ◆ In-depth market knowledge
- ◆ Livestock - sheep classing - ram selection



To find your local  
AWN Wool Specialist visit  
[www.woolnetwork.com.au](http://www.woolnetwork.com.au)



Australian  
**Wool**Network

[www.woolnetwork.com.au](http://www.woolnetwork.com.au)



# GLEN ESK CORRIEDALE STUD

Founded 1948

- ★ 66 years of breeding
- ★ Corriedale ram sales around Australia and overseas
- ★ True to type
- ★ Bright white soft handling wool



**Ian MacKinnon "Glen Esk"**

**832 Glen Esk Road, Conara, Tasmania 7211, Australia**

**Tel: +61 (0) 3 6391 5558 Fax: +61 (0) 3 6391 5543**

**Mob: +61 (0) 419 359 491 Email: [ian.mackinnon2@bigpond.com](mailto:ian.mackinnon2@bigpond.com)**